

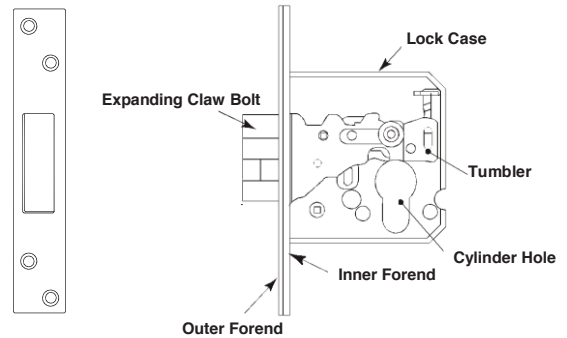
## 9054 SERIES - EURO PROFILE CYLINDER MORTICE SLIDING DOOR LOCK

Cylinder has 5 pin mechanism. } when supplied  
Key variations practically infinite. }  
Easy replacement for most mortice locks of similar size, as detailed  
fitting instructions enclosed.  
Complete with fixing screws.  
Back set and case size: 44mm on 64mm (9054-25)  
57mm on 76mm (9054-30)

*Fitting instructions enclosed*

**Delf Architectural Hardware**

T: 1300 362 625 F: 1300 362 643  
www.delfarchitectural.com.au



Strike Plate

**9054-25/9054-30**

**Please carry out following test before proceeding with fitting.**

Operate cylinder with keys/thumbturn before fixing.  
If cylinder is not already inserted within lock case remove outer forend,  
insert cylinder into lock case fix in position with the M5 screw provided.  
Test lock bolt operation from both sides with each of the keys supplied.

### FITTING INSTRUCTIONS

#### Preparation for fixing lock:

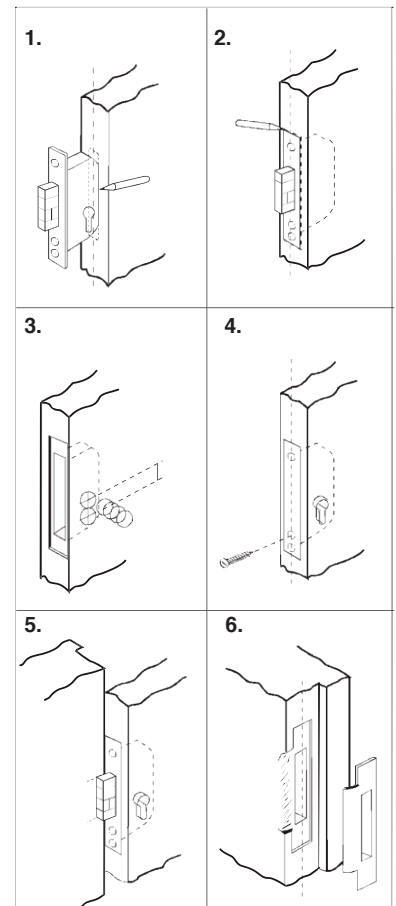
Remove outer forend, remove M5 cylinder screw, turn cylinder key to enable cylinder to be withdrawn from lock.

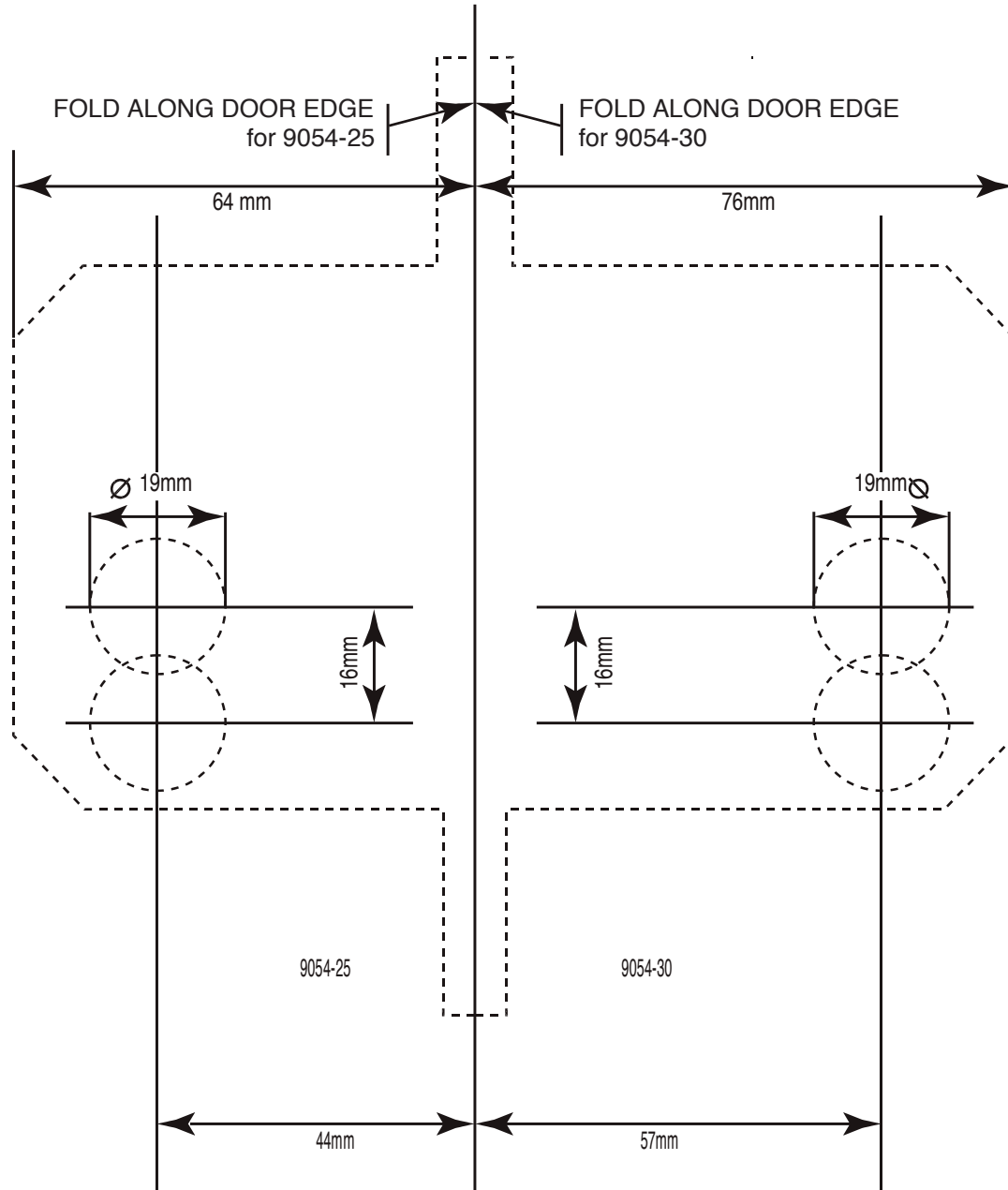
1. Position lock centrally on door edge and mark around case of lock. Cut or drill out a slot to suit lock case ensuring a reasonably good but not over-tight fit.
2. With outer forend replaced insert lock into door and mark around forend. Remove wood 3.5mm deep to allow flush fitting of lock to door. Using template supplied mark on door, position of cylinder hole centre.
3. Remove lock from door and drill 2 x 19mm holes through door from both sides into the mortice.
4. Remove outer forend, insert lock into door and fix in position with wood screws provided. Insert cylinder into lock through door. Fix in position with the M5 screw, check the operation of the lock bolt from both sides.

Replace outer forend. With the door open test operation of bolt with the key.

#### Preparation to fix box locking plate:

5. With the door open and the lock bolt out close the door gently on to the frame and mark on the frame the position of the bolt.
6. Transfer the lines of the lock bolt to the position required when the door is closed, so that the lock bolt has clearance to move freely.  
Mark around strike plate and remove wood until plate finishes flush with the frame.  
Fix with two of the four screws provided and check all the operations of the lock with the door closed. Adjust position of the strike plate if necessary and insert the remaining screws.  
Re-check all the operations and ensure that the lock bolt operates freely with the door closed.





## NOTICE TO INSTALLERS

Use **MUST** be made of the fixing screw provided, to secure the cylinder in the Lock Case.

On cylinder operated mortice locks the cylinder is always assembled to the lock case after the case has been fixed in the door. Incorrect alignment of the cylinder can lead to difficulty in operation and accelerated wear.

Sufficient clearance must be allowed around the cylinder body for it to freely take up its correct position in the lock case when held in position by the cylinder fixing screw.

## LOCK CASE TEMPLATES

Please ensure correct template has been selected before proceeding to cut door.